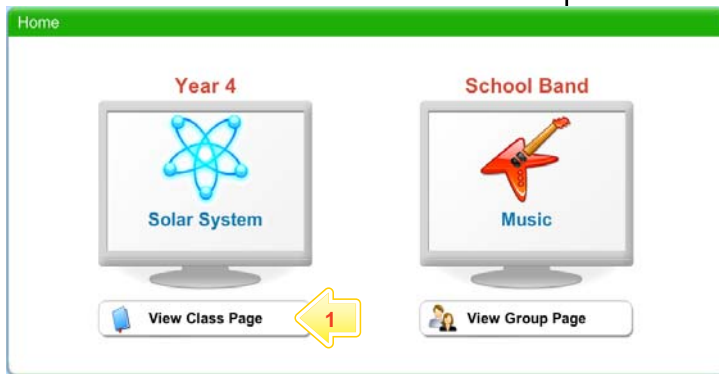


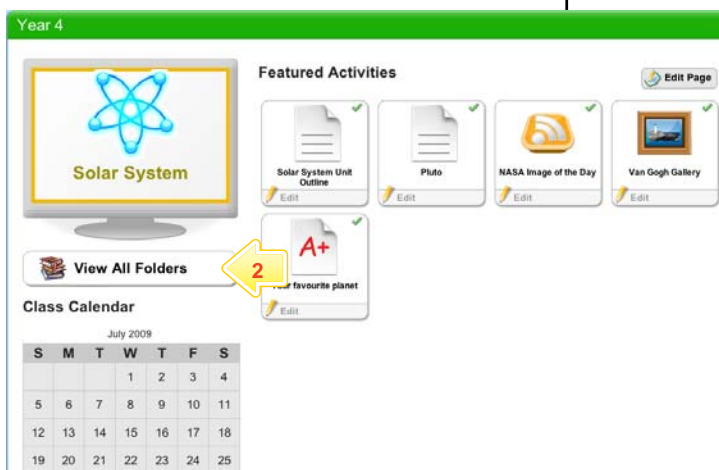
# Vote

## Create a Vote

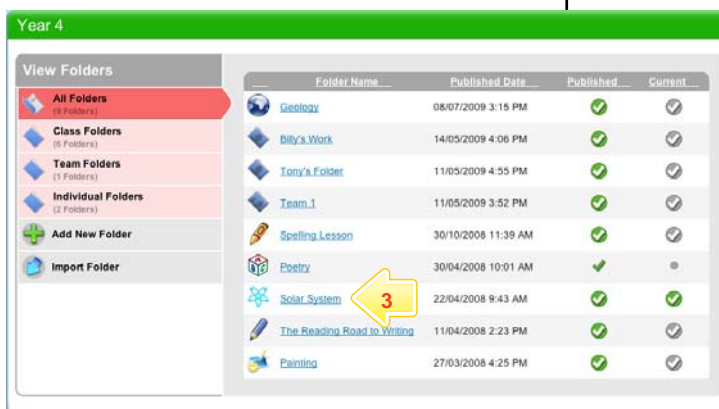
StudyWiz Votes allow you to pose a single question with a number of teacher-set answers. Users view the vote and select their answer from the answer list. StudyWiz compiles the results and teachers and students can view the statistics of the Vote. A user may only cast their vote once and voting is anonymous.



1 Below the Class or Group in which you want to create the activity, click the **View Class Page** button.

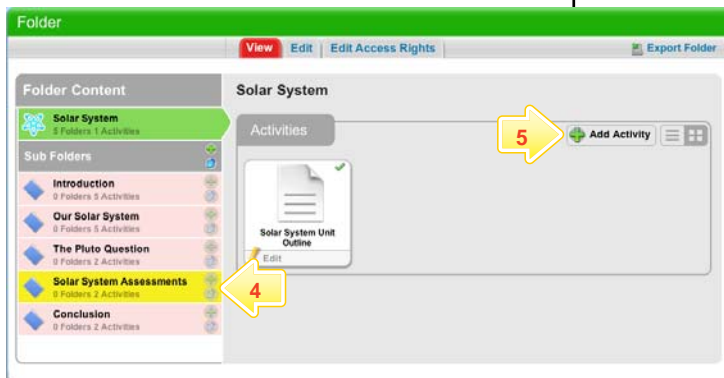


2 Click the **View All Folders** button.



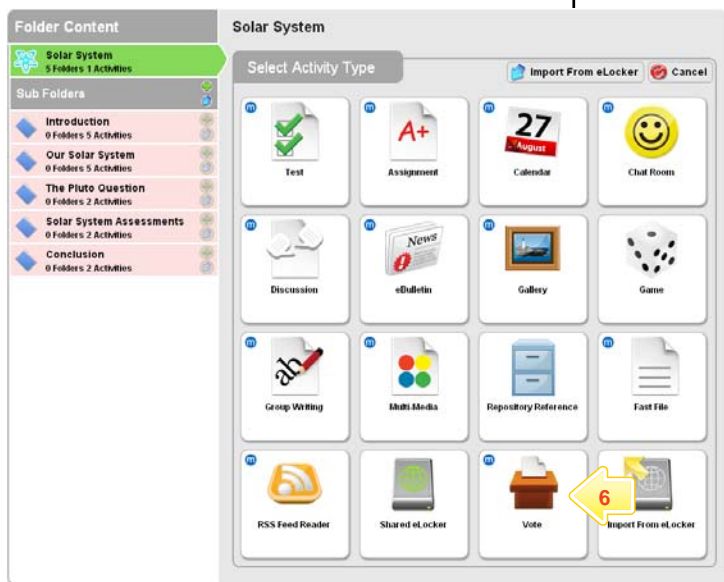
3 Click the Folder to which you want to add the activity.

# Vote

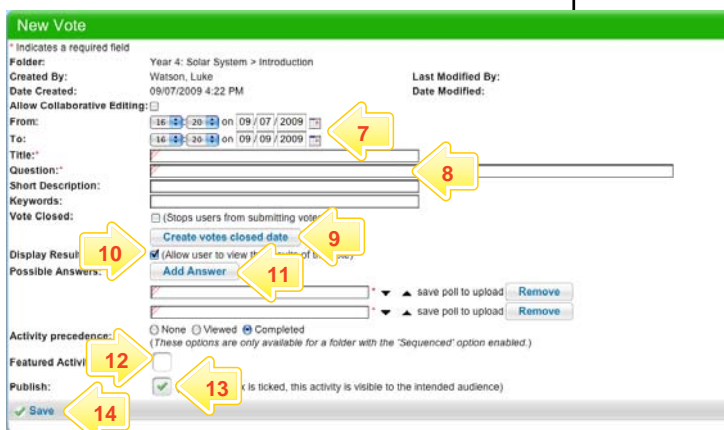


4 If you want to save the activity in a sub folder, click the Sub Folder.

5 Click the **Add Activity** button.



6 Click **Vote**.



7 In the **From** and **To** fields, set the times and dates between which you want the Vote to be accessible.

8 Complete the **Title**, **Question**, **Short Description** and **Keywords** fields. Separate keywords with spaces or commas.

9 If you want to select a date for the Vote to close, click the **Create votes closed date** link and then set a closing date.

10 If you want users to be able to see the results after they have cast their vote, select the **Display Results** checkbox.

11 Add answers in the **Possible Answers** fields. To add additional answers click the **Add Answer** button.

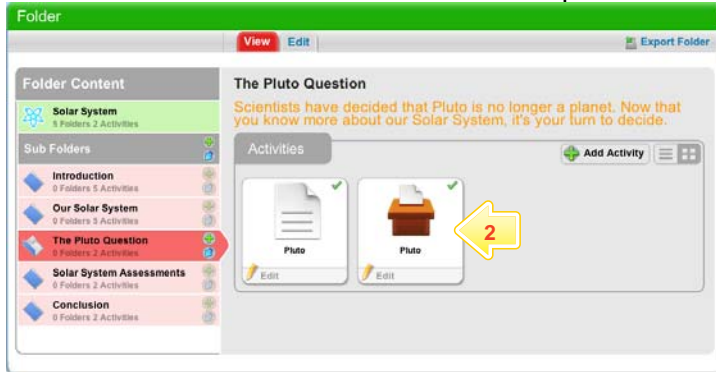
12 To set the Vote as a featured activity, select the **Featured Activity** checkbox.

13 If the Vote is ready to publish, select the **Publish** checkbox.

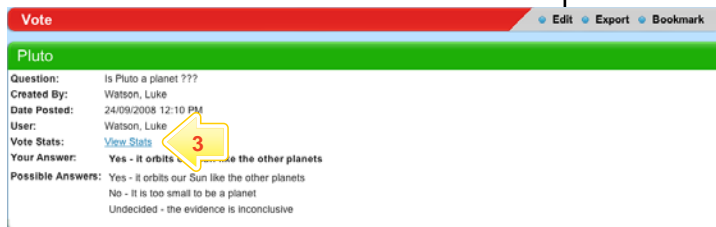
14 Click **Save**.

# Vote

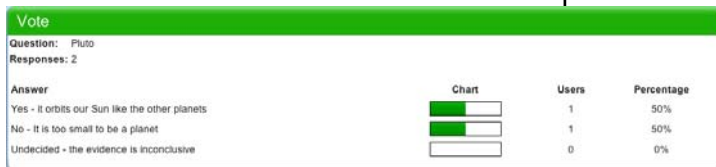
## View the Results of a Vote



- 1 Open the Folder that contains the Vote.
- 2 Click the Vote. The Vote page appears.



- 3 Click **View Stats**. The Vote statistics appear.



The Vote statistics indicate the number of votes submitted and the percentage of votes for each answer.

## Tips and Hints

- 1 Use Votes to question Students, Teachers, Groups, or the whole School on their opinions. Votes are a helpful polling tool, and are a simple way for groups to decide a course of action.
- 2 Set a prerequisite for a Vote by clicking the **Add Prerequisite** button. This allows you to specify a Test or QTAssessment that your students must complete before they can attempt the new activity.
- 3 Use StudyWiz Votes as a transformative tool. Record the results of a number of Votes taken during a series of lessons. Monitor students' reactions and note how they change.

If you have any ideas for ways to use Votes you're invited to share it with other teachers at the StudyWiz Global Community – <http://studywizqc.org/>. Log in using the button on your StudyWiz deployment.