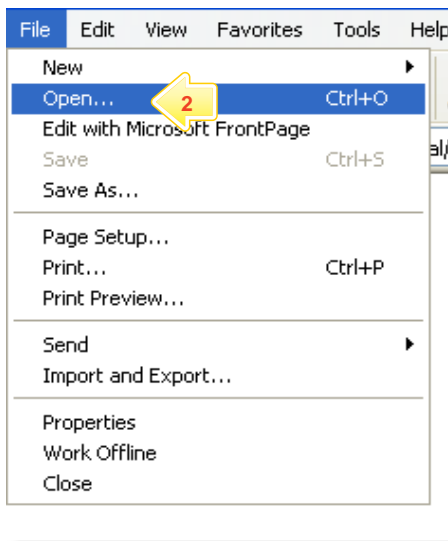


WebDAV eLocker Set Up

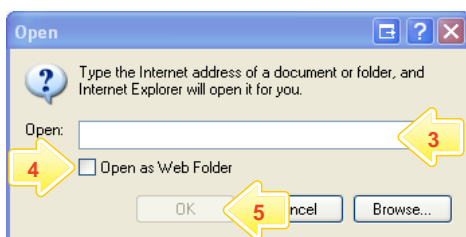
WebDAV (Drag and Drop) eLockers allow you to set your operating system to point to your Studywiz eLocker as though it was a hard drive on your computer. This allows you to 'drag and drop' files directly into and out of Studywiz.

Before you can use this feature it needs to be enabled on your Studywiz deployment and you have to carry out a short setup procedure on your computer.

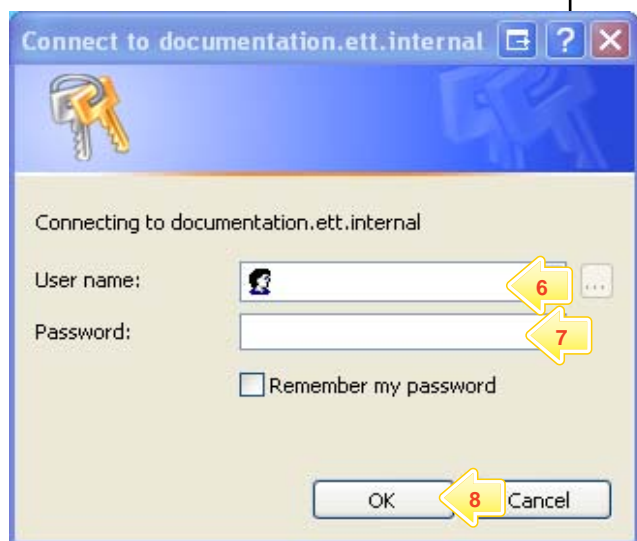
Follow the procedure below to set up a WebDAV eLocker on your computer.



- 1 Start Internet Explorer.
- 2 From the **File** menu, select **Open**.

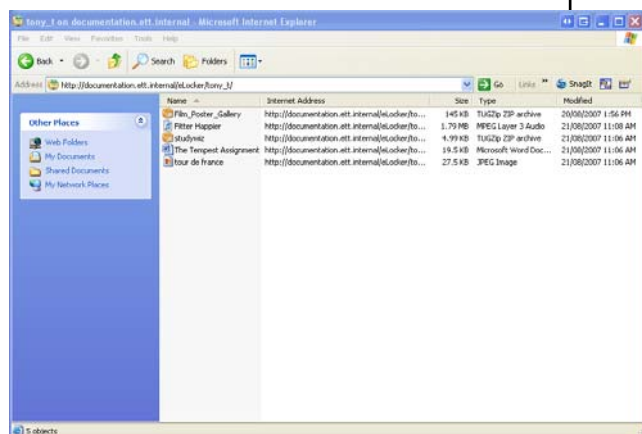


- 3 In the **Open** field, type **`http://<Studywiz>/eLocker/<username>`**
 - **Studywiz** = the URL you use to access your deployment of Studywiz.
 - **Username** = your Studywiz username.
- 4 Select the **Open as Web Folder** checkbox.
- 5 Click **OK**.



- 6 In the **User Name** field, type your Studywiz user name.
- 7 In the **Password** field, type your Studywiz password.
- 8 Click **OK**.

Note If the authentication process does not work on the first attempt, click **Cancel** and re-enter your details. Windows operating systems sometimes produce an error with WebDAV operations. Repeating the username and password entry two or three times usually results in a successful connection.



Your eLocker appears on a Windows Explorer page. The eLocker contents are displayed in the right panel.

Tips and Hints

- 1 To navigate to your eLocker at any time, click the **Start** button, select **My Network Places** and then double click your eLocker in the list of network places that appears.
- 2 You can drag and drop any of the following file types into and out of your eLocker: videos, images, audio, documents, Studywiz Activities, SCORM Courses, or whole folders and their contents.
- 3 Use your eLocker as you would a normal hard drive.

If you have any ideas for ways to use eLockers you're invited to share them with other teachers at the Studywiz Global Community – <http://studywizgc.org/>. Log in using the button on your Studywiz deployment.