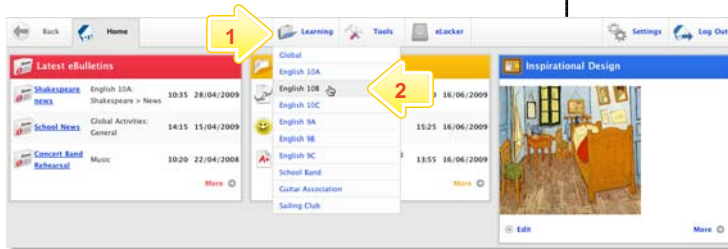


Vote

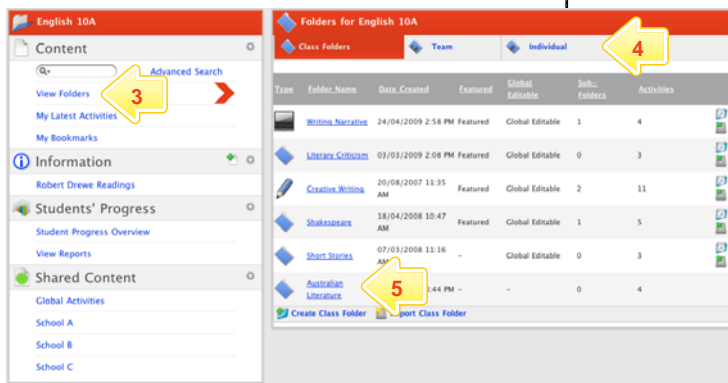
Create a Vote

StudyWiz Votes allow you to pose a single question with a number of teacher-set answers. Users view the vote and select their answer from the answer list. StudyWiz compiles the results and teachers can view the statistics of the Vote. A user may only cast their vote once and voting is anonymous.



1 Roll the mouse pointer over the **Learning** tab. The **Learning** drop-down list appears.

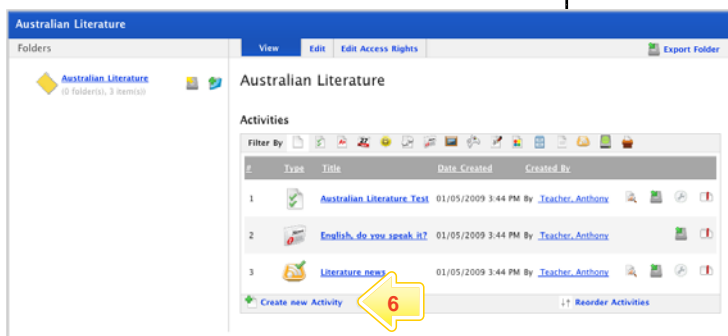
2 From the **Learning** drop-down, select the Class or Group in which you want to save the activity. The Class or Group page appears.



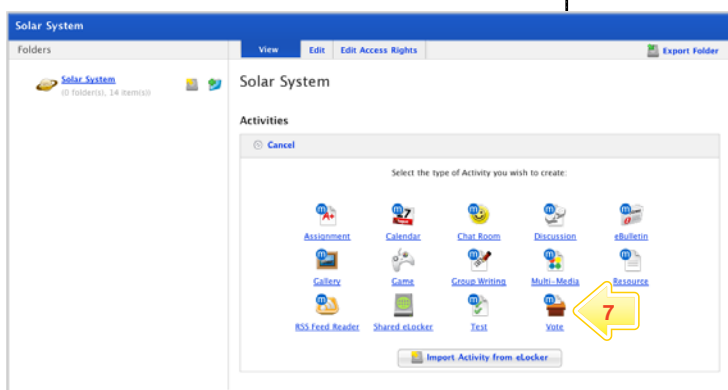
3 Click **View Folders**.

4 If you want to create the activity in a Team folder or Individual folder, click the appropriate tab.

5 Click the folder in which you want to save the activity.



6 Click **Create new Activity**.



7 Click **Vote**.

Vote

The 'New Vote' form includes the following fields and options:

- 8** From and To fields: Set the times and dates between which you want the Vote to be accessible.
- 9** Title, Question, Short Description, and Keywords fields: Complete these fields. Separate keywords with spaces or commas.
- 10** Create votes closed date: Click this link to set a closing date.
- 11** Display # checkbox: Select this to allow users to see results after casting their vote.
- 12** Possible Answers fields and Add Answer button: Add answers here.
- 13** Featured Activity checkbox: Select this to set the Vote as a featured activity.
- 14** Publish checkbox: Select this if the Vote is ready to publish.
- 15** Save button: Click this to save the Vote.

- 8 In the **From** and **To** fields, set the times and dates between which you want the Vote to be accessible.
- 9 Complete the **Title**, **Question**, **Short Description** and **Keywords** fields. Separate keywords with spaces or commas.
- 10 If you want to select a date for the Vote to close, click the **Create votes closed date** link and then set a closing date.
- 11 If you want users to be able to see the results after they have cast their vote, select the **Display Results** checkbox.
- 12 Add answers in the **Possible Answers** fields. To add additional answers click the **Add Answer** button.
- 13 To set the Vote as a featured activity, select the **Featured Activity** checkbox.
- 14 If the Vote is ready to publish, select the **Publish** checkbox.
- 15 Click **Save**. The Prerequisites option is enabled.

View the Results of a Vote

The 'Creative Writing' folder displays a list of activities. The activity 'Shakespeare's Sonnets' is highlighted with a callout **1**, indicating where to click to view the Vote.

- 1 Locate and click the Vote you want to view. The Vote panel appears.

The 'Shakespeare's Sonnets' Vote panel shows the following information:

- Question: Were Shakespeare's sonnets written by someone else?
- Created By: Teacher, Anthony
- Date Posted: 11/08/2008 10:50 AM
- User: Teacher, Tony
- Vote Stats: **View Stats** (callout **2**)
- Your Answer: yes
- Possible Answers: yes, no

- 2 Click **View Stats**. The Vote statistics appear.

The 'Vote' statistics panel displays the following data:

Answer	Users	Percentage
yes	2	100%
no	0	0%

The Vote statistics indicate the number of votes submitted and the percentage of votes for each answer.

Tips and Hints

- 1** Use Votes to question Students, Teachers, Groups, or the whole School on their opinions. Votes are a helpful polling tool, and are a simple way for groups to decide a course of action.
- 2** Set a prerequisite for a Vote by clicking the **Add Prerequisite** button. This allows you to specify a Test or QAssessment that your students must complete before they can attempt the new activity.
- 3** Use Studywiz Votes as a transformative tool. Record the results of a number of Votes taken during a series of lessons. Monitor students' reactions and note how they change.

If you have any ideas for ways to use Votes you're invited to share it with other teachers at the Studywiz Global Community – <http://studywizgc.org/>. Log in using the button on your Studywiz deployment.