



## Studywiz 9.5.2 Release Notes

01.00, 23 Dec 2011

### Introduction

This document contains a short explanation of each of the major changes included in Studywiz 9.5.2, as well as a categorised list of all changes made.

### Major Changes

Several areas of Studywiz have undergone major overhaul for version 9.5.1. The most significant changes are in the following areas:

- Learner Matrix
- Google Integration
- School Apps
- Shared eLocker.

### Learner Matrix

Learner Matrix is the new Studywiz marking and reporting system. It allows teachers and other academic staff to mark students' work and report on progress, and allows students and their parents to keep track of their marks. It also includes a pastoral care component to take the system beyond the mere recording and distribution of marks.

The screenshot shows the 'Matrix' interface for 'English 10A'. It displays a table of student performance across four assessments: English Assessment (for King's High Testing), Weekly English Assessment, Self Assessment, and A Midsummer Night's Dream - Puck. The table includes columns for Grade, Effort, and Comment for each student.

Student	English Assessment (for King's High Testing) 12 Dec 2011			Weekly English Assessment 16 Dec 2011			Self Assessment 16 Dec 2011			A Midsummer Night's Dream - Puck 16 Dec 2011	
	Grade	Comment		Grade	Effort	Comment	Grade	Effort	Comment	Assignment Mark	Comment
Student, Ant	B	Great work, just a few things you could improve.		A	2	Great work.	A	1	-	A+	Excellent work.
Student, Bert	A	Outstanding work, keep it up!		C	4	You could have worked harder on this one.	B	2	-	-	-
Student, Cam	C	If you worked a little harder, I'm sure you could do better.		C	3	You need to work harder.	A	1	-	-	-
Student, Dan	D	Please see me after class on Tuesday.		B	2	Great effort, keep it up.	B	1	-	-	-
Student, Edward	A	Excellent!		A	1	Excellent as always.	B	2	-	-	-

Features:

- Classroom teachers, students, and parents can track a combination of online and offline assessments
- Schools can create school-wide standardised assessments
- Schedule assessments daily, weekly and per term, based on your school calendar
- Students, teachers and tutors can continuously discuss progress



- Department heads and school management have access to all relevant reports and dialogue
- The customisable roles let you fit Learner Matrix around your school structure and processes
- Pastoral system ensures staff have access to progress and are in direct communication with students
- Real time results available to students and parents when required
- Interface utilises the latest web technology to put important data in easy reach of teachers
- Create branded parental reports including a quality assurance workflow prior to publication
- iOS app for iPhone and iPod Touch allows all stakeholders to access learner dialogue

Studywiz Learner Matrix connects continuous progress tracking, formative assessment, pastoral support and parental reporting to help schools deliver a holistic assessment and reporting system. Learner Matrix is for schools that understand that assessment is not just about a grade in a box.

### Online Mark Book

Learner Matrix lets teachers automatically save the results of Studywiz Activities such as Assignments and Tests to the mark book. Teachers can also create custom assessments which map to other non-Studywiz assessments. The mark book supports a blended approach to assessment and can be used to store results for assessments completed outside of Studywiz.

### Formative Comments

Learner Matrix puts dialogue and formative feedback first. Each assessment can include comments from the teacher as well as having a dialogue which includes the student and all stakeholders. Learner Matrix also makes it easy to maintain a dialogue about the overall progress of a student.

### Pastoral System

Teachers, Heads of Department, Tutors and other staff involved in supporting students can access and interact with the Learner Matrix results for any student that they are assigned to. The pastoral dialogue system facilitates a conversation between a student and their teachers.

Teachers can create custom assessments or push results and interaction data from Studywiz Activities.

Students, staff and parents can choose how many weeks worth of data to view.

The unique pinning feature allows teachers to easily compare data.

Pastoral comments allow the student and their teachers to engage in formative dialogue.

Pastoral comments can also be viewed and added via the Learner Matrix app for iPhone and iPod Touch.

### Make The Most Of The Data

Many systems obscure important data when you most need it. In Learner Matrix teachers can compose comments and reports while at the same time browsing historical data about each student. The system also presents data in context appropriate displays for students, parents, teachers, tutors, heads of department and senior management.

### Parental Reporting

Parents can access Learner Matrix on a continuous basis to view results and comments as the school makes these available. In addition to this, Learner Matrix provides the ability to produce and publish collated student reports as frequently as desired. These reports are branded with your school logo and information, and are sent to the parents within Studywiz and exported as a PDF document which can be printed and posted.

### Mobile

Students, teachers and tutors don't have to be tied to a desktop or laptop to be able participate in the dialogue. Users can view and add new assessment comments through their iOS device wherever and whenever they wish.

## Google Integration

Studywiz-Google integration allows schools to combine the powerful collaboration tools of Google with Studywiz's suite of learning and teaching activities.

Both Google Mail and Google Docs can be accessed from within Studywiz. Using a single sign-on students and staff can effortlessly move from Studywiz to Google Apps without the need for additional usernames and passwords.

Studywiz-Google integration lets you put Google Mail on your Studywiz homepage and allows you to manage your Google Docs from within your Studywiz eLocker. Google Docs can also be embedded into Studywiz Activities, including Discussions, Tests and Multi-Media, using the text editor fields.

The screenshot displays the eLocker interface for a teacher named Anthony. The interface is divided into several sections:

- Header:** "eLocker - Teacher, Anthony" and "Available on the App Store".
- Navigation:** "Folders" and "Search" tabs.
- Filter By:** "Show All", "Document", "Spreadsheet", "Presentation", "Drawing".
- Left Sidebar:**
  - eLocker:** (5 sub-folder(s), 8 item(s))
    - Educational Resources (0 sub-folder(s), 1 item(s))
    - English Class Resources (0 sub-folder(s), 1 item(s))
    - Maths (0 sub-folder(s), 1 item(s))
    - Poets (0 sub-folder(s), 0 item(s))
    - Writing (0 sub-folder(s), 0 item(s))
  - Shared eLockers:** (7 sub-folder(s), 0 item(s))
    - Art 10A Default eLocker (0 sub-folder(s), 0 item(s))
    - Class 4J Default eLocker (0 sub-folder(s), 0 item(s))
    - English 10A Default eLocker (0 sub-folder(s), 0 item(s))
    - History 10A Default eLocker (0 sub-folder(s), 0 item(s))
    - Maths 10A Default eLocker (0 sub-folder(s), 0 item(s))
    - Music 10A Default eLocker (0 sub-folder(s), 0 item(s))
    - Science 10A Default eLocker (0 sub-folder(s), 0 item(s))
  - Learning Objects:** (2 folder(s))
  - Google Docs:**
- Main Content Area:**
  - Create:** Document, Spreadsheet, Presentation
  - Upload:** Import from file, Import from eLocker
  - Table:**

Type	Name	Last Updated By	Last Updated	Quota Used	share	delete
Document	Testing 1 2 4	t2121@studywiz.net.au	21 Dec 2011	0.0 KB	share icon	delete icon
Image	Penguins.jpg	t2121@studywiz.net.au	20 Dec 2011	0.0 KB	share icon	delete icon
Document	redlands1	t2121@studywiz.net.au	29 Nov 2011	0.0 KB	share icon	delete icon
Presentation	Avondale Preso	t2121@studywiz.net.au	10 Nov 2011	0.0 KB	share icon	delete icon
Document	Melbourne High	t2121@studywiz.net.au	07 Nov 2011	0.0 KB	share icon	delete icon
Document	Pittwater House Demo Doc	t2121@studywiz.net.au	02 Nov 2011	0.0 KB	share icon	delete icon
Document	Jupiter copy 8.doc	t2121@studywiz.net.au	26 Oct 2011	0.0 KB	share icon	delete icon
Document	Geoffs Test 3	t2121@studywiz.net.au	26 Oct 2011	0.0 KB	share icon	delete icon
Document	Test doc	t2121@studywiz.net.au	25 Oct 2011	0.0 KB	share icon	delete icon
Spreadsheet	Geoffs demo sheet	t2121@studywiz.net.au	25 Oct 2011	0.0 KB	share icon	delete icon

Studywiz administrators can easily manage Google accounts from within Studywiz, provisioning of Google accounts can be done using your current Studywiz student and staff lists as your dataset.

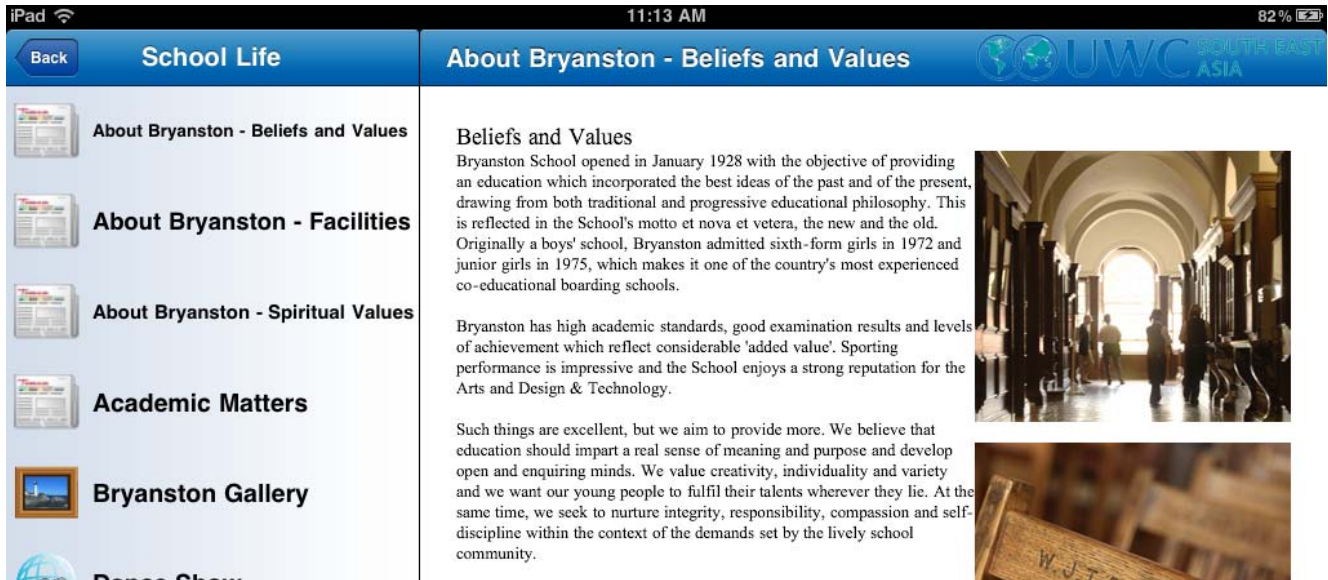
- Access Google Mail from Studywiz with a single sign-on
- Create and manage Google Docs within your personal eLocker
- Easily share Google Docs with your Studywiz classes and groups
- Personalise learning by providing access to individual students and small groups
- Enhance Studywiz Activities by embedding Google documents, spreadsheets and presentations
- Import documents from your eLocker to Google Docs
- Works with Studywiz Mobile
- Includes management tools for Studywiz administrators.

## School Apps

The Studywiz School App provides a mobile platform for users to access a selection of the school's Studywiz content on their iPads and iPhones. It interacts with the school's Studywiz deployment to provide Studywiz Activities from a shared group within Studywiz.

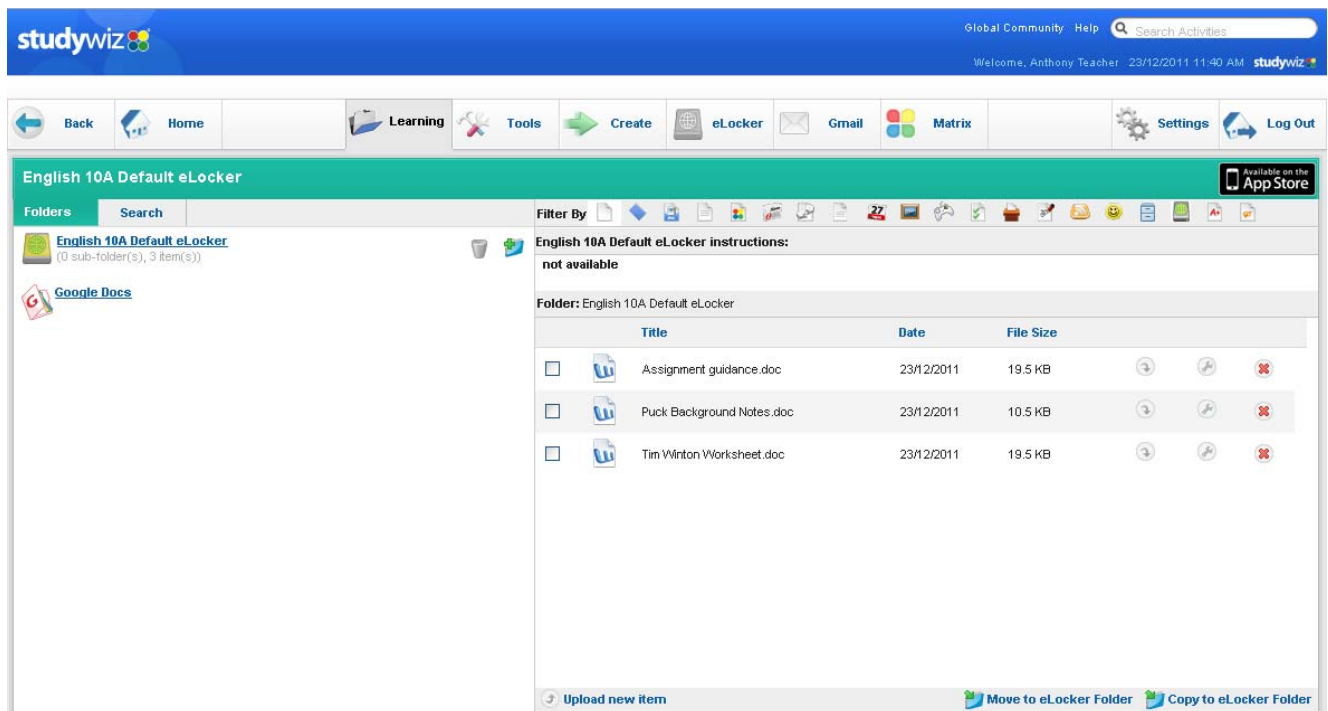
The Studywiz School App also works in conjunction with Studywiz Mobile eLockers to give Studywiz users a mobile learning package that provides complete control over learning resources online, offline and when mobile.

Schools that already have a Studywiz School App will now be able to create School App content directly from their live deployment.



## Shared eLocker

Default Shared eLockers can now be accessed directly from the Class Content section of Class Pages. They can be configured to suit schools' preferences, can be mapped to external storage locations and no longer expire according to date. Configuration options include read-only, student dropboxes and making dropboxes public.



## All Changes in Studywiz 9.5.2

All changes made from the previous release to Studywiz 9.5.2 are listed in this section.

### Activities

Two new Activities have been added to Studywiz, specifically to support the functions of Studywiz School Apps. The Rich Text and Link Activities allow teachers to set up Activities with purely rich text content or a link. These Activities can also be exported and imported.

### Assignment

The Assignment Activity window and the Description field can now be resized to allow users greater flexibility when creating and embedding content. Assignment downloads also contain more information about each student's assignment submission.

Assignment	Incident #
Log out on viewing assignment submissions	107997
Download all submissions buttons	107691
Activity precedence	107237

### Browsing

Where teachers are given the ability to manage their own classes, the list of classes now appears in alphabetical order.

Browsing	Incident #
Manage Classes - Class list order	107955

### eLocker

The Studywiz eLocker now includes a Google Docs section, giving users access to any Google documents they have sufficient privileges to access. Studywiz respects Google's 'Collection' structure, and presents collections as Folders in the eLocker.

Default Shared eLockers can now be access through WebDAV.

### FastFile/File

The File Activity window and the Full Description field can now be resized to allow users greater flexibility when creating and embedding content.

### Folders

Users can now create Global Activities using Quick Create.

Folders	Incident #
Support for Global Folders in Quick Create folder selection.	107991

### Games

A bug sometimes preventing Students from creating Games in Groups has been fixed.

Games	Incident #
Students creating Games via Groups	108322

## Groups

Assignments in Team folders in Groups now correctly display the users who have submitted work.

Groups	Incident #
Submission list for team folders in groups	107002

## Import/Export

When users begin importing a file to an Activity from their eLocker, then once in the eLocker decide to upload a new file, an error no longer occurs.

## Induction Letters

User search in Induction Letters has been updated to improve the search logic.

## Learner Matrix

Learner Matrix	Incident #
Viewing a group as tutor in Markbook	107926
Assessment titles editable	107687
Student effort marks freezing	107668
Parent view of students in Markbook – per-student filtering	107621
Student access to Pastoral comments	107538

## Login

Studywiz can now be configured to allow users to log in once from a given computer and subsequently be logged in automatically when they log in to that same computer.

## Mobile

The Contacts tab can now be disabled on the mobile interface to prevent users from seeing contact details of other users in their classes.

Mobile	Incident #
Mobile (iPhone) interface – improved security for 'Contacts' tab	107475
Removal of Contacts tab from mobile version (configurable)	105956

## Multi-Content

A problem preventing uploaded files being saved in Multi-Content Activities has been resolved.

Multi-Content	Incident #
Upload option in Multimedia activities	106972

## Parent

Parents without Studywiz accounts can now register themselves and log in to the system.

Parent Interface	Incident #
Parent self-registration	107456

## SCORM

A check for the new SQL reserved word 'exit' has been added to the SCORM engine.

Shared eLocker	Incident #
Class Default Shared eLocker expiry default behaviour changed	107911
Class Shared eLocker - access as student from 'Class Content' panel	107704

## Uploads

Users attempting to upload disallowed file types now receive the message 'Invalid File Type' and the upload status is displayed as 'Failed'.

## User Management

Users can now be moved between schools/levels in multi-school deployments and will retain all their data.